



**India Meteorological Department  
(Ministry of Earth Sciences)**

**HOURLY UPDATE ON CYCLONIC STORM “REMAL”**

**BULLETIN NO. 05**

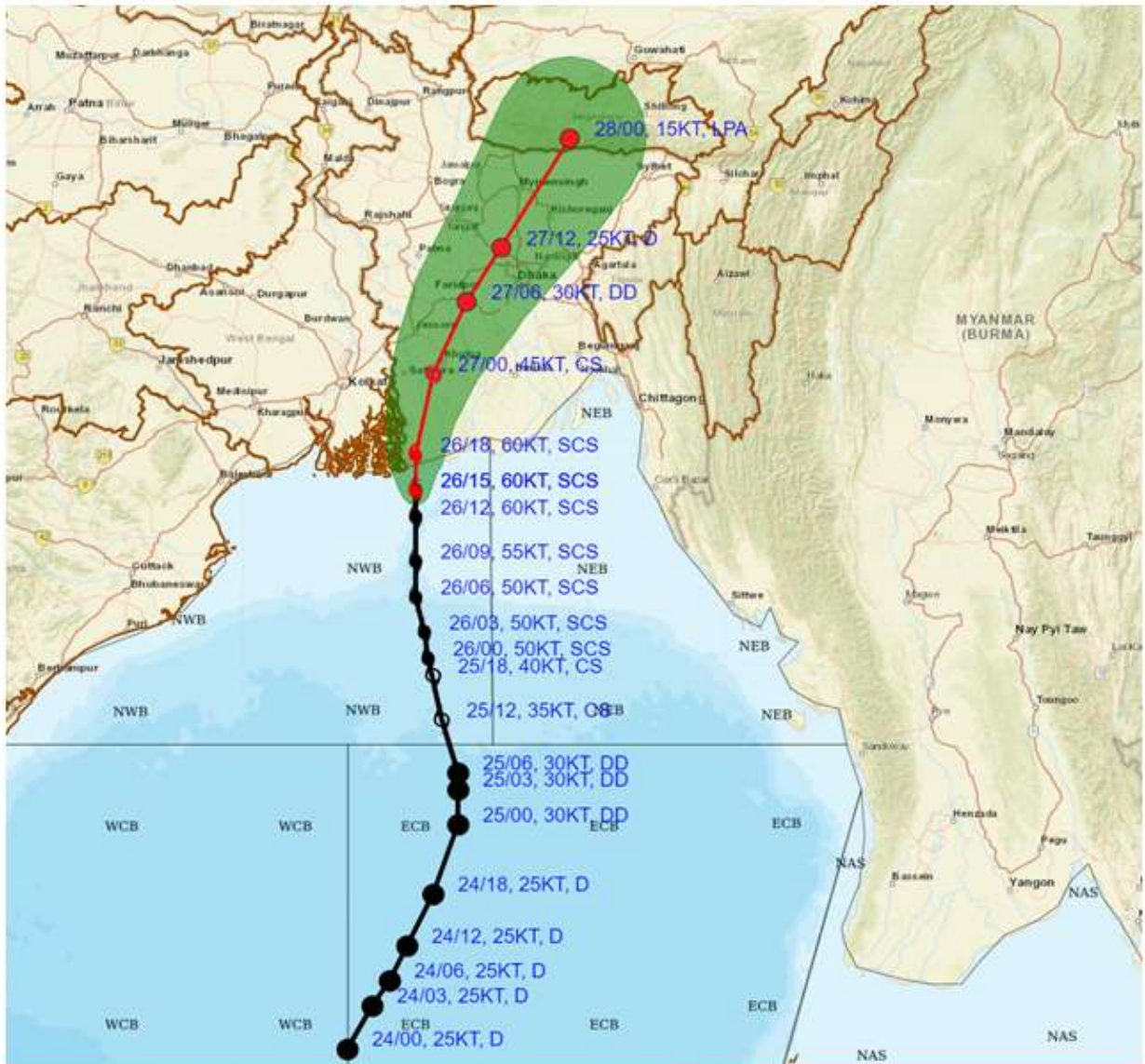
DATE: 26-05-2024

TIME OF ISSUE: 2200 HRS IST

<b>DATE/TIME(IST) OF OBSERVATION</b>	<b>BASED ON 26-05-2024 (2130 HRS IST)</b>
<b>LOCATION LATITUDE/LONGITUDE</b>	The Severe Cyclonic Storm “Remal” (pronounced as “Re-Mal”) over the North Bay of Bengal moved nearly northwards, with a speed of 14 kmph during past 07 hours and lay centered at 2130 hrs IST of today, the 26th May, 2024 over the same region near <b>latitude 21.5°N and longitude 89.2°E</b> about 115 km east-southeast of Sagar Islands (West Bengal), 120 km west-southwest of Khepupara (Bangladesh), 100 km south-southeast of Canning (West Bengal) and 120 km south-southwest of Mongla (Bangladesh). <b>The center is about 20 km from the coastline. Forward sector of wall cloud region is entering into land. The landfall process is continuing over coastal areas of Bangladesh and West Bengal. It will continue for next 3 hours.</b>
<b>CURRENT INTENSITY NEAR CENTRE</b>	<b>110-120 Kmph Gusting To 135 Kmph.</b>
<b>OBSERVATIONS (2030 HOURS IST)</b>	<b>RAINFALL (since 0830 IST in mm):-</b> Digha-45, Haldia-36.
<b>FORECAST MOVEMENT, INTENSITY AND LANDFALL</b>	It is very likely to continue to move nearly northwards and cross Bangladesh and adjoining West Bengal coasts between Sagar Island and Khepupara, close to southwest of Mongla (Bangladesh) by midnight of today, the 26 <sup>th</sup> may 2024 as a severe cyclonic storm with maximum sustained wind speed of 110-120 kmph gusting to 135 kmph.
<b>FORECAST WIND</b>	<b>Gale wind speed reaching 110-120 kmph gusting to 135 kmph is prevailing</b> along & off Bangladesh and West Bengal & North Bay of Bengal and likely to continue during next 6 hours and decrease thereafter.



**FORECAST TRACK ALONGWITH CONE OF UNCERTAINTY IN ASSOCIATION WITH SEVERE CYCLONIC STORM 'REMAL' OVER NORTH BAY OF BENGAL BASED ON 1500 UTC (2030 IST) OF 26<sup>TH</sup> MAY 2024.**



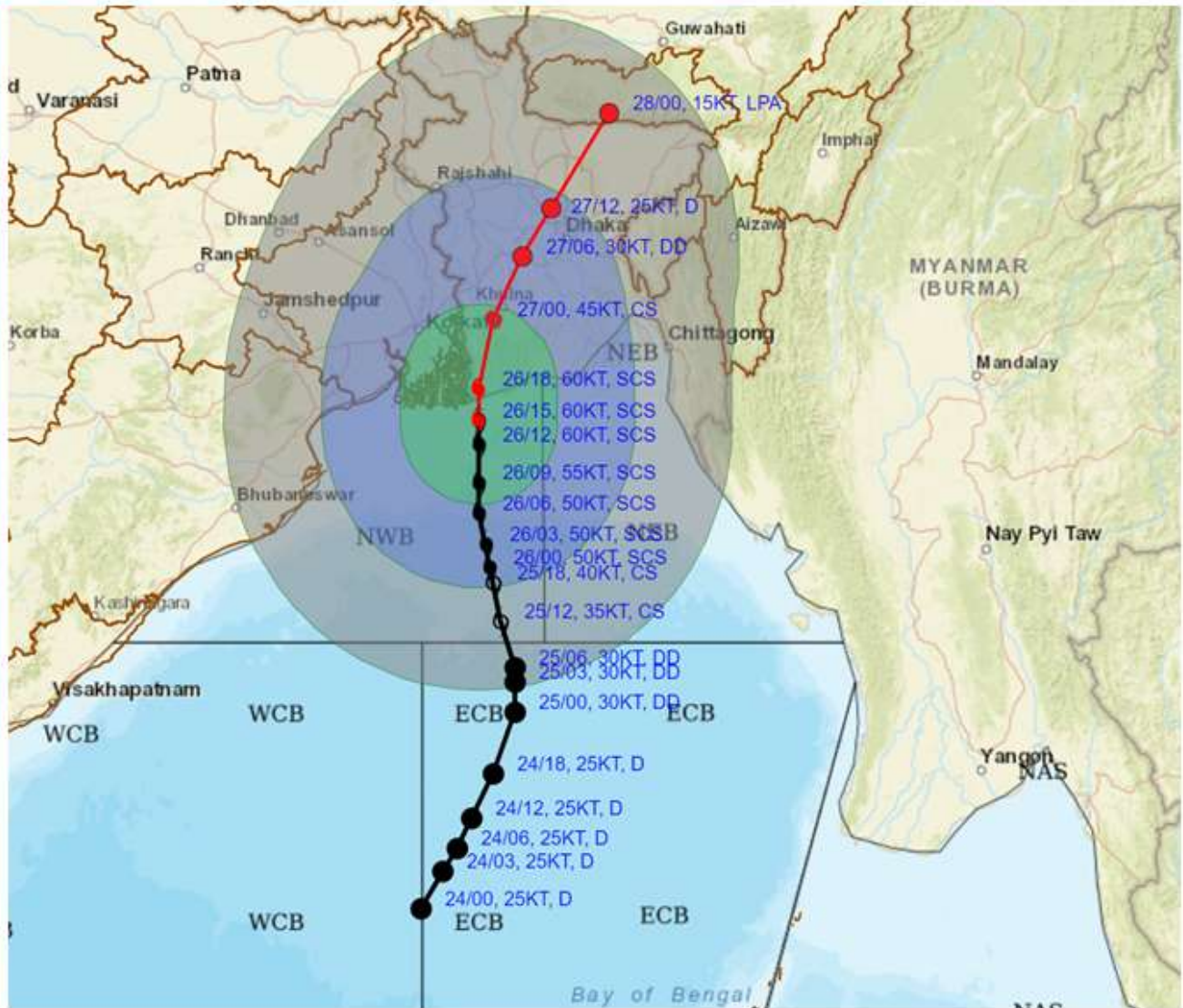
DATE/TIME IN UTC  
 IST=UTC + 0530  
 L: LOW PRESSURE AREA  
 WML: WELL MARKED LOW PRESSURE AREA  
 D: DEPRESSION (17-27 KT)  
 DD: DEEP DEPRESSION (28-33 KT)  
 CS: CYCLONIC STORM (34-47 KT)  
 SCS: SEVERE CYCLONIC STORM (48-63KT)  
 VSCS: VERY SEVERE CYCLONIC STORM (64-89 KT)  
 ESCS: EXTREMELY SEVERE CYCLONIC STORM (90-119 KT)  
 SuCS: SUPER CYCLONIC STORM (≥ 120 KT)

- LESS THAN 34 KT
- ⊙ 34-47 KT
- ⊙ ≥ 48 KT
- OBSERVED TRACK
- FORECAST TRACK
- ▲ CONE OF UNCERTAINTY

Forecast Date and Time (UTC)	DISTANCE (KM) AND DIRECTION FROM STATIONS			
	Canning	Sagar Island	Khepupara	Mongla
26.05.24/0900	110, SSE	110, ESE	120, WSW	130, SSW
26.05.24/1200	140, SSE	130, ESE	140, SW	160, S
26.05.24/1800	80, SE	110, E	100, WSW	90, SSW



**FORECAST TRACK ALONGWITH QUADRANT WIND DISTRIBUTION IN ASSOCIATION WITH SEVERE CYCLONIC STORM 'REMAL' OVER NORTH BAY OF BENGAL BASED ON 1500 UTC (2030 IST) OF 26TH MAY 2024.**

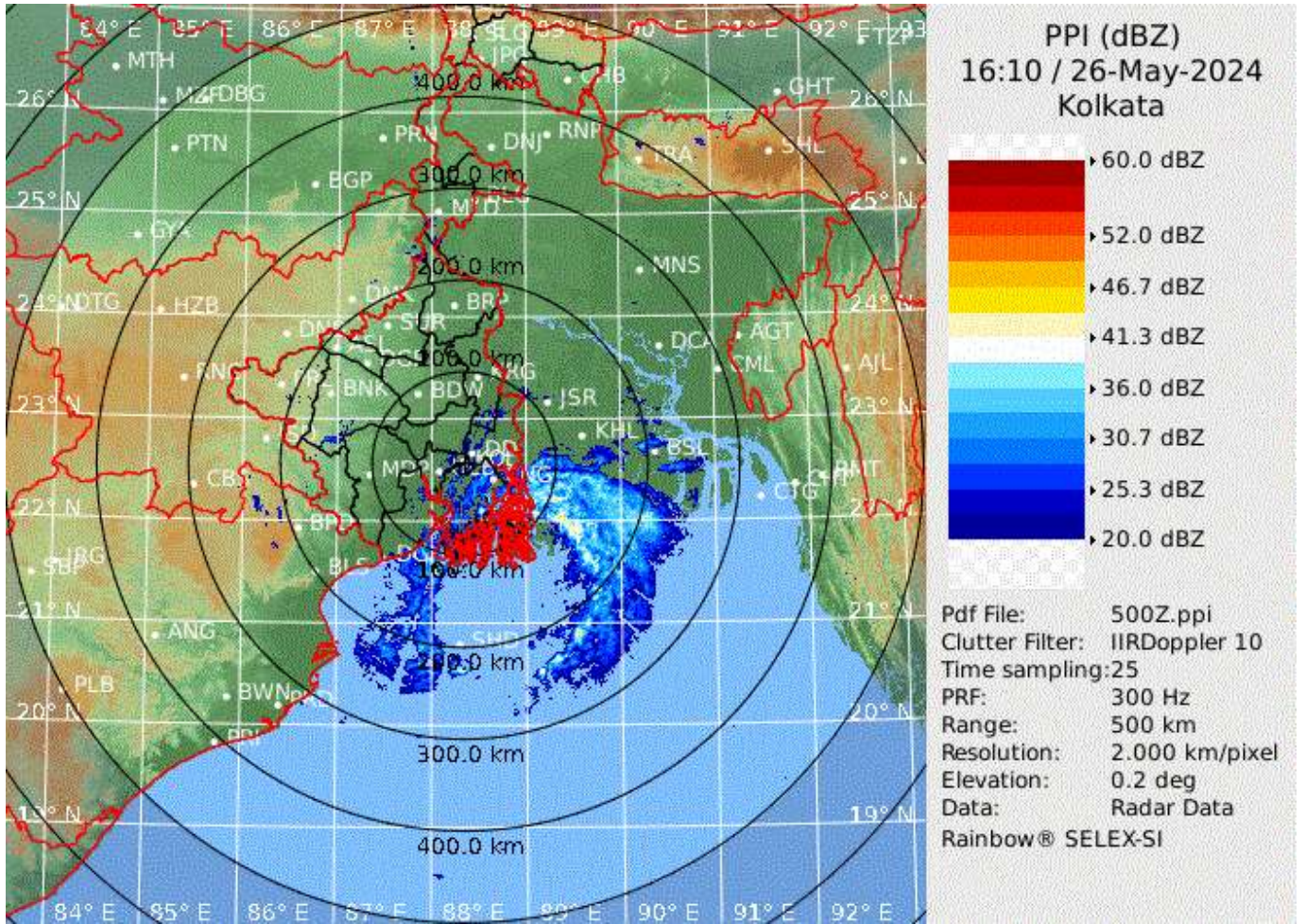


DATE/TIME IN UTC  
 IST=UTC +0530  
 L: LOW PRESSURE AREA  
 WML: WELL MARKED LOW PRESSURE AREA  
 D: DEPRESSION (17-27 KT)  
 DD: DEEP DEPRESSION (28-33 KT)  
 CS: CYCLONIC STORM (34-47 KT)  
 SCS: SEVERE CYCLONIC STORM (48-63KT)  
 VS-CS: VERY SEVERE CYCLONIC STORM (64-89 KT)  
 ES-CS: EXTREMELY SEVERE CYCLONIC STORM (90-119 KT)  
 SuCS: SUPER CYCLONIC STORM (≥ 120 KT)

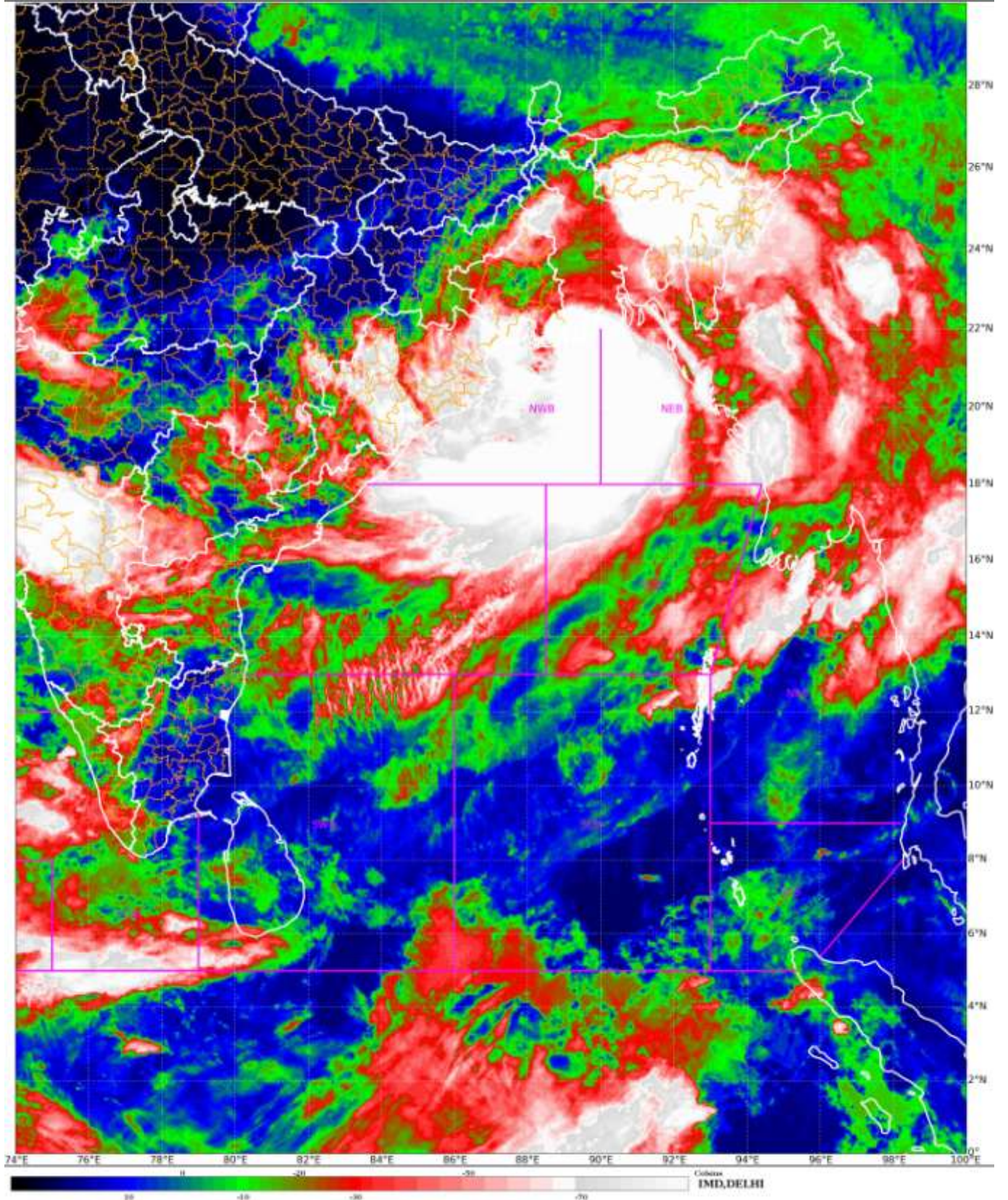
● LESS THAN 34 KT  
 ○ 34-47 KT  
 ● ≥ 48 KT  
 — OBSERVED TRACK  
 — FORECAST TRACK  
 — CONE OF UNCERTAINTY  
 AREA OF MAXIMUM SUSTAINED WIND SPEED:  
 28-33 KT (52-61 KMPH)  
 34-49 KT (62-91 KMPH)  
 50-63 KT (92-117 KMPH)  
 ≥ 64 KT (≥118 KMPH)

**IMPACT OVER THE SEA**

MSW (knot/kmph)	Impact	Action
28-33 (52-61)	Very rough seas	Total suspension of fishing operations
34-49 (62-91)	High to very high seas	Total suspension of fishing operations
50-63 (92-117)	Very high seas	Total suspension of fishing operations
≥ 64 (≥118)	Phenomenal	Total suspension of fishing operations



**KOLKATA RADAR IMAGERY AT 2140 HOURS IST OF 26<sup>th</sup> MAY 2024**



**INSAT 3D based NHC Curve image based on 1600 UTC of 26<sup>th</sup> May 2024**